

Updated: September 2024



2024
HOYA Vision Care
product & technology
reference guide

Redefining every aspect of vision correction

HOYA

FOR THE VISIONARIES

Global technology leader

Since 1941, HOYA® has been a leader in optical technology and innovation with a passion for finding the best vision solutions. Our teams around the world tirelessly research ways to manipulate light to provide higher-quality lens solutions that deliver clear results for our eye care partners and their patients.



Our leadership and partnership in our HOYA Lab network was recognized as Ultimate Partner for the third year in a row by the readers of Vision Monday and 20/20 magazines.

We are HOYA, and we are for the visionaries.



Health care

- Eyeglass lenses
- Contact lenses



Electronics

- Mask blanks, photomasks for LSI
- Photomasks for LCD panels
- Glass disks for HDD



Imaging

- Optical glass/lenses
- Laser equipment



Medical

- Medical endoscopes
- Intraocular lenses
- Prosthetic fillers and orthopedic implants

Table of Contents

HOYA History	2
Visionary Alliance™	3
HOYA Progressive Lens Resource Guide.....	4
Progressives (PALs)	5
Premium Single Vision	8
Computer and Work Lenses.....	10
Anti-reflective and Blue Filtering Treatment Guide	12
Anti-reflective Treatments.....	13
Materials.....	15
Sun Solutions.....	17
Product Comparison Charts.....	22
Lens Availability Charts	24
AR Compatibility Guide.....	27
HOYA Progressive Fixed Corridor Guide.....	28



Day One Job One

**Enroll today and earn points
starting on Day 1, Job 1.**

No monthly minimum purchase required.



**Visionary Alliance is where independent ECPs
can go to feel connected to their HOYA network.**

For Existing Members

97% of Visionary Alliance Members
plan to renew. You can renew
membership here.



Scan QR code or
visit [visionaryalliance.com](https://www.visionaryalliance.com)

For New Members

New to HOYA?
Pre-enroll here.
















Scan QR code or
visit bit.ly/va-pre-enroll

Your Patients. Your Brand. HOYA Support.

The Promotion is open only to professional eye care practices that are not excluded, debarred, or suspended, nor owned or controlled, in whole or in part, by a person who is excluded, debarred, or suspended, from participation in any federal health care program as defined at 42 U.S.C. § 1320a-7b(b).

HOYA progressive lens resource guide

Technology	Feature	New					
		Amplitude® BKS/Mini	Summit® cd/ecp BKS	Amplitude® HD3 /Mini	Array® 2 /Wrap	iD LifeStyle® 4	iD MyStyle® 3
 AdaptEase™ Technology	Improves intermediate and near vision by reducing peripheral distortion without compromising distance clarity.						✓
 3D Binocular Vision™	Improved horizontal and vertical prism imbalance reduces distortions in near and intermediate areas, giving less swaying effect when moving.					✓	✓
 Integrated Dual Surface™ Technology	Vertical progressive component on front for easy viewing near to far. Horizontal progressive component on back giving widest near field of view.			✓		✓	✓
 BKS Technology®	Applies HOYA Free Form backside surfacing technology to any semi-finished single vision lens in virtually any material. BKS offers larger cutouts for larger frames.	✓	✓		✓		
 Free Form Production	Pixel-perfect lens calculation for optimal visual performance for your patient's prescription.	✓	✓	✓	✓	✓	✓
 Corridor Length Options*	Adjusted progressive power distribution creates the ideal corridor length to match patient's activities.	11, 15	11, 14	11, 14	11, 13, 15, 17	11, 12, 13, 14, 15, 16	11, 12, 13, 14, 15, 16
 Position of Wear**	Pantoscopic tilt, vertex distance and face form angle measurements are considered in the design to match the patient's specific frame and Rx.			✓***	✓	✓	✓
 Binocular Eye Model	3D patented modeling of lens design for each patient.				✓	✓	✓
 Binocular Harmonization Technology™ (BHT)	Patented technology balances the prescription differences between the right and left eyes, resulting in effortless focusing at intermediate and near distances.				✓	✓	✓
 Stable View Enhancer	Evaluation method to reduce distortion when moving around and going up or down stairs.			✓		✓	✓
 View Xpansion Technology	Reduces aberrations from all viewing angles, allowing patients to maintain clear vision with head movement.			✓		✓	✓
 HOYA iDentifier™	A web questionnaire that records personal prescription, wearing history, wearing parameters, and lifestyle preferences of the patient.						✓
 Design Options	Tailored lens design solution fitted to your patient's personal lifestyle activities and visual needs.					Indoor, Urban, Outdoor	Tyro, Expert, Detail, Modern, Adventure

*For proper fitting, please consult the product centration chart.

**Default Position of Wear Measurements: Vertex Distance: 12.30mm, Pantoscopic Angle: 8.30 degrees, Wrap: 4.40 degrees

***Amplitude HD3/Mini is a compensated design but does not allow Position of Wear Measurements. Default Measurements are used.

New

Our best progressive lens by far.



iD MyStyle® 3

For everyday clarity and maximum visual comfort in nearly every situation.

iD MyStyle 3 is our most advanced and personalized lens design, incorporating all of HOYA's latest patented technologies.

You can use the MyStyle iDentifier™ ordering platform to create nearly 400 different versions of the lens based on the patient's lifestyle and previous glasses. This ensures a smooth adaptation to their new MyStyle lenses. The most discerning PAL wearers will benefit from tailor-made lenses.

Our best technologies in one lens by far.

Seamless visual comfort, for any activity, in all environments.



NEW

AdaptEase™ Technology

Creates faster adaptation and clearer vision by reducing peripheral astigmatic distortion.



NEW

3D Binocular Vision™

Reducing the peripheral prismatic imbalance reduces distortions and offers an elevated level of comfort.



Binocular Harmonization Technology™

A true binocular solution that helps the eyes work better together for precise and effortless focusing, depth of vision, and stability.



Binocular Eye Model

Evaluates the lenses as a pair to ensure the best possible binocular vision and harmonized images.



Integrated Dual Surface™ Design

Splitting the progressive component between the front and back surfaces maximizes the field of view, minimizes distortion, and reduces eye rotation.

iD MyStyle 3 can also be ordered in one of our five convenience options.



NEW

Tyro*

Indoors/Outdoors

- New to progressive lenses
- Smoother peripheral experience
- More indoor lifestyle



NEW

Expert

Indoors/Outdoors

- Experienced progressive lens wearers
- Active lifestyle
- Bifocal to PAL conversion



Detail

Indoors

- Close-work focus
- IT worker, mechanic, accountant
- Puzzles, crafts, scrapbooking, hobbyist



Modern

Indoors/Outdoors

- Most popular option
- Single pair for convenience
- No viewing-distance preference



Adventure

Outdoors

- Clear edge-to-edge distance
- Sports and outdoor activities
- Teacher, driver
- Walks their dog daily

*Tyro means "novice" or "beginner." Tyro is specially designed to help new progressive lens wearers adapt quickly.

2020 VM
EYE VOTE
 READERS' CHOICE 2023

Your favorite progressive lens brand just got better!

iD LifeStyle® 4

Prescribe HOYA's new iD LifeStyle 4 with confidence.

3D Binocular Vision™ technology has been added to our bestselling LifeStyle lens design. Your patients will experience easier adaptation resulting from comfortable vision, fewer distortion areas, and easier focusing, so you can prescribe iD LifeStyle 4 with confidence.

HOYA's new 3D Binocular Vision™ technology delivers faster adaptation thanks to **3x less peripheral deformation**.¹ iD LifeStyle 4 reduces the occurrence of unwanted prismatic effects in the near-range peripheral vision, resulting in more comfortable, stable vision.

Available designs

- **iD LifeStyle 4 Indoor:** Designed for presbyopes who spend a lot of their time indoors, looking at digital devices or reading
- **iD LifeStyle 4 Urban:** Designed for presbyopes who are active, always on the go, and also enjoy reading books and using their digital devices
- **iD LifeStyle 4 Outdoor:** Designed for presbyopes who primarily wear their correction for distance use yet still require clear vision to see their phone and other near materials

Polarized options are available in gray, brown, and green.



Conventional vision technologies without Binocular Technologies



iD LifeStyle 4 with Binocular Technologies

iD LifeStyle 4's four core technologies



3D Binocular Vision™

Reducing the peripheral prismatic imbalance reduces distortions and offers a brand-new level of comfort.



Binocular Harmonization Technology™

A true binocular solution that helps the eyes work better together for precise and effortless focusing, depth of vision and stability.



Binocular Eye Model

Assesses the lens's binocular design to provide the best binocular and harmonized images possible.



Integrated Dual Surface™ Design

Splitting the progressive component between the front and back surfaces maximizes the field of view, minimizes distortion and reduces eye rotation.

1. Based on models of peripheral progressive deformation with and without 3D Binocular Vision™ technology.

Simply outstanding progressive lenses

Array® 2

Array 2 applies HOYA free form back side surfacing technology to any semi-finished lens, in any material.

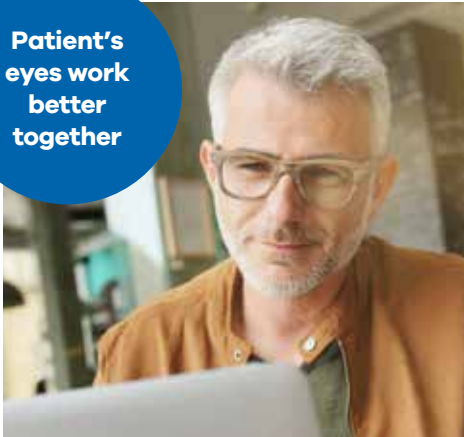
Binocular Harmony

Array 2 lenses now include HOYA's Binocular Harmonization Technology.™ This patented technology takes into account the difference between the right and left eye as individual components to calculate the optimal binocular lens design to provide natural vision and depth perception.



- Vision stability
- Precision focus
- Ease of dispensing with variable length (VL)
- Effortless adaptation
- Higher customer satisfaction

Patient's eyes work better together



Available corridor lengths

- **Array 2:** 11, 13, 15, 17, VL
- **Array 2 Wrap:** 11, 13, 15, 17, VL

Consistency

Array 2 progressive lenses have the broadest range of material availability, with clear, polarized options including Polarized and Sensity® light reactive lenses. This makes offering your patients multiple pairs simple knowing your patient will have a consistent experience when wearing clear indoor glasses or outdoor sun protection.

Simplicity

The number of frame styles available is continually growing and can affect the type of lens design you can use. Thanks to Array 2's unique variable length (VL) auto-corridor selection you can accommodate any patient frame choice. You simply order with patient prescription and seg height, and the software selects the ideal corridor for your patient.

Array 2 offers:

Natural, comfortable vision	Free form backside surfacing	Position of wear and frame measurements	Provides wider, more stable viewing areas	Optimized for individual prescription	Larger cut outs to accommodate larger modern frame styles and trends

Premium single vision

HOYA has driven single vision lens design innovation with a passion for finding the best vision solutions that deliver clear results. For practices that offer free form progressives, you should also consider offering free form single vision lenses to your patients to further differentiate your brand.



Why MySV™ is right for today's patients

Traditional single vision lenses correct the central vision very effectively. Unfortunately, traditional single vision lenses do not meet patients' demanding needs for overall quality of vision. Your patients deserve lenses that utilize today's lens technology for today's visual demands.

Which patients will benefit most from MySV?

Confidence



Patients who want to have 360° visual comfort everywhere they look.

Peripheral Vision

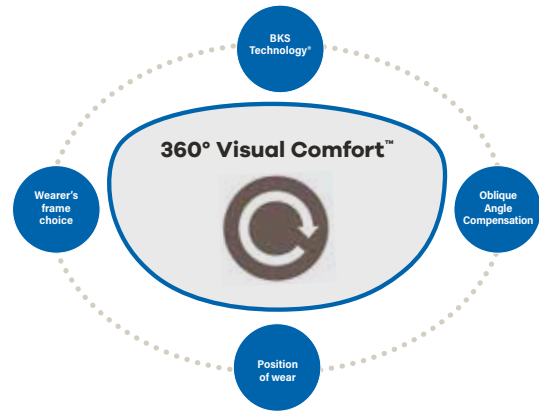
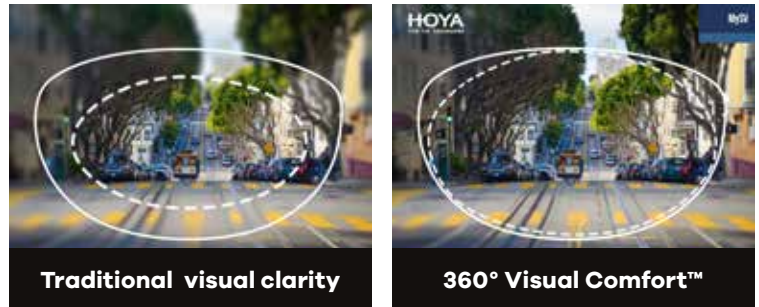


Patients with astigmatic prescriptions who struggle with peripheral distortions in conventional lenses.

Aesthetics



Patients who feel limited in their frame selection due to lens thickness.



The MySV experience implements four powerful elements

For too long, single vision wearers have been underserved. The technology available to differentiate their experience is here. HOYA's MySV lenses achieve fully personalized 360° Visual Comfort™ through:

- 1 **BKS Technology®**
- 2 **Oblique angle compensation**
- 3 **Each patient's position of wear**
- 4 **Wearer's frame choice**



iD Single Vision



Standard design

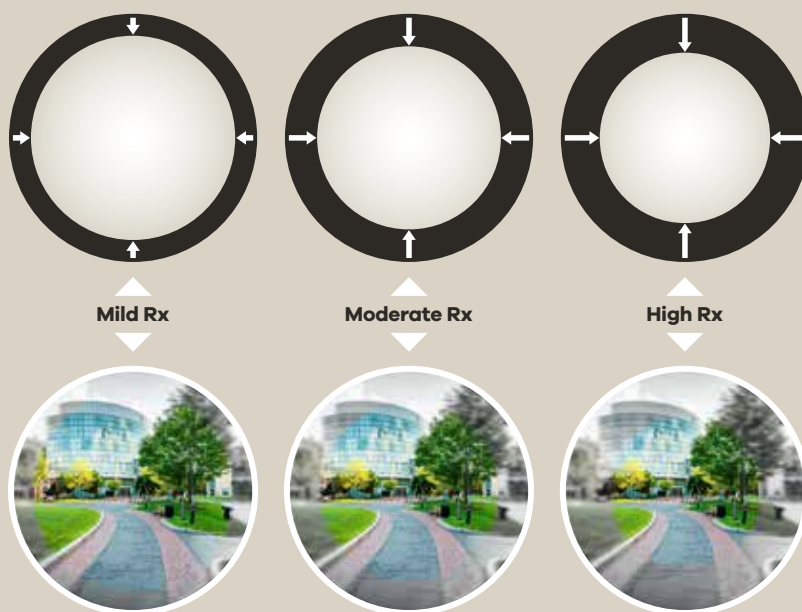
iD Single Vision® Advanced bi-aspheric single vision by HOYA

iD Single Vision utilizes aspheric curves on both the front and backside of the lens, creating a bi-aspheric HOYA free form lens design. This provides expanded peripheral viewing, especially in higher prescriptions, and results in the thinnest lenses.

Design benefits

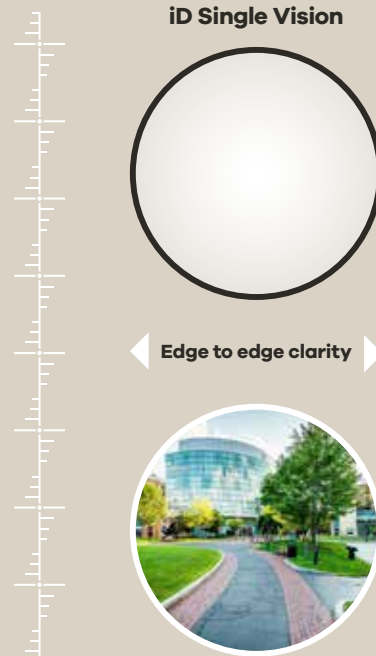
- Optimized visual acuity and a crisper image perception
- Noticeably more relaxed vision thanks to precise and effortless focusing
- More accurate correction
- Providing OC and monocular PD measurements yields exceptional results

Stronger prescriptions can reduce edge to edge clarity.



Any prescription can be enhanced and provide improved clarity in the lens periphery.

iD Single Vision



Clear vision at all powers
+/- 4.00 to +/- 6.00

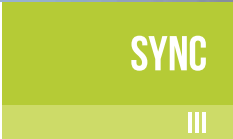
Computer and work lenses

More than half of Americans report experiencing symptoms of digital eye strain and many Americans do not know computer eyewear can protect against digital eye strain.*

HOYA builds the bridge between technology and experience with iD lenses designed for your digital lifestyle. The iD Space, Screen and Zoom are shaped on both the front and back surfaces for unparalleled workspace comfort.



*The Vision Council, Digital Eye Strain Report 2016.



Our eyes weren't made for screens. Sync III™ lenses are.

Most people spend an average of 8-10 hours a day looking at digital screens, with peaks reaching up to 15 hours a day.* Digital eye strain symptoms can manifest in as few as 2 hours of digital screen viewing.†

Sync III lenses have a slight power boost design that will support and relax your eye muscles, relieving eye strain to let you focus more easily. Sync III lenses work with any standard prescription.



Power boost design variations



Free form backside surfacing



Position of wear and frame measurements

Three boost levels:

- Sync III 5 (+0.57D): Mild support for younger adults, including students
- Sync III 9 (+0.95D): Extra support for heavy screen use and moderate symptoms of digital eye strain
- Sync III 13 (+1.32D): Heavy screen use and significant symptoms of digital eye strain



*HOYA Consumer Digital Behavior Study, October 2017.

†Ang C., Dinevski D., Vlasak N., Kok A. Taking the strain. *Optician*. 05/2017, vol. 253, no. 6600, p.25-28.

See better. Work better.

New

iD WorkStyle® 3 occupational/computer-specific lenses are designed to maximize comfort in the intermediate zone where typical workday functions are performed.

iD WorkStyle 3 shares the same technologies found in iD MyStyle 3, designed to maximize comfort for specific work styles. iD WorkStyle 3 is the primary pair of glasses for patients who spend most of their day – whether at work or at play – in an office or up-close environment.

iD WorkStyle 3 is available in three designs:

Space

- The primary focus is beyond the distance of a computer screen
- Ideal for patients who are active in their office environment

Screen

- The primary focus is at an intermediate distance, like those working at a desk
- Ideal for anyone working on dual monitors

Zoom

- The primary focus is clarity at a short distance and widest possible near area
- Ideal for hobbies and laptop work requiring high levels of concentration



HOYA anti-reflective and blue filtering treatments

Technology	Feature	HiVision®	HiVision ViewProtect®	Super HiVision® EX3™	Super HiVision® Meiryo™ EX4™	Recharge®
 Substrate Matching Technology	Each layer is engineered to work with the other layers improving the performance, appearance, and durability.	✓	✓	✓	✓	✓
 Reduced Reflections	Provides optimal visual clarity and reduces eye strain.	✓	✓	✓	✓	✓
 Oleophobic Treatment	Smudge-repellant technology helps keep lenses clean, even after being touched.		✓	✓	✓	✓
 Hydrophobic Treatment	Water-repellant technology retains premium, easy-to-clean properties even after long-term use and repeated wiping.		✓	✓	✓	✓
 Low Reflection	Provides enhanced vision for night driving, improves appearance, and optimizes visual clarity.		✓	✓	✓	
 Ultra-durable Anti-Scratch Layer	Provides optimal durability and extends the life of the lens.				✓	✓
 Blue Reflect Layer	Protects against blue light, reduces digital eye strain, and minimizes eye fatigue.					✓

Anti-reflective treatments

Your patients expect:

- Extreme durability
- Superior clarity
- Easy to clean

60

years of coating evolution

Super HiVision® Meiryō™ EX4™ is superior clarity that lasts.

HOYA's Super HiVision Meiryō EX4 AR treatment provides everything your patients expect and goes above and beyond any other coating on the market.

Extreme durability

- Up to **2.5x better scratch resistance** than major competitor's best coating¹

Easy to clean

- Stays **easy to clean 10x longer** than major competitor's best coating³

Superior clarity

- **56% lower reflectance** than major competitor's best coating^{2,6}

Your patients will enjoy superior clarity⁴ that lasts longer and benefit from best-in-class surface durability⁵.

Additional resources

More information on the tests conducted is in our white paper titled "**Exploring key features that work together to create the ultimate coating**" which is available on our website www.hoyavision.us and on request.



Uncoated

Super HiVision Meiryō EX4



Uncoated

Super HiVision Meiryō EX4



Uncoated

Super HiVision Meiryō EX4

¹ HOYA data on file. Product assessment report – Hi-Vision Meiryō. 03/2023. Compared to several competitor coatings including major competitor's best coatings. Passed 2.5kg SWSC test when most competitive lenses tested did not pass 1kg in the SWSC.

² HOYA data on file. Product assessment report – Hi-Vision Meiryō. 03/2023. The reflection has been calculated based on the reflection values measured in the Luminous reflectance R_v evaluation.

³ HOYA data on file. Product assessment report – Hi-Vision Meiryō. 03/2023. Hi-Vision Meiryō (HVLL 2.0) maintains Hydrophobic performance more than 10X that of major competitor.

⁴ HOYA data on file. Product assessment report – Hi-Vision Meiryō. 03/2023. Hi-Vision Meiryō (HVLL 2.0) performed over 2x better than several competitive coatings in the HB test. Hi-Vision Meiryō (HVLL 2.0) demonstrate best in class surface durability through both HB and SWSC tests.

⁵ HOYA data on file. Product assessment report – Hi-Vision Meiryō. 03/2023. Hi-Vision Meiryō (HVLL 2.0) maintains Hydrophobic performance up to 5X that of all competitive coatings tested.

⁶ HOYA data on file. Product assessment report – Hi-Vision Meiryō. 03/2023. Hi-Vision Meiryō lasts longer than all major competitors. 56% lower reflectance than major competitor's best coating resulting in exceptional clarity. Hi-Vision Meiryō maintains Hydrophobic performance up to 5X that of closest competitors.

Anti-reflective treatments

60
years of coating
evolution



Recharge®



Blue light
filtration



Scratch
resistant



Glare
resistant



UV
protection



Smudge
resistant



Water
resistant



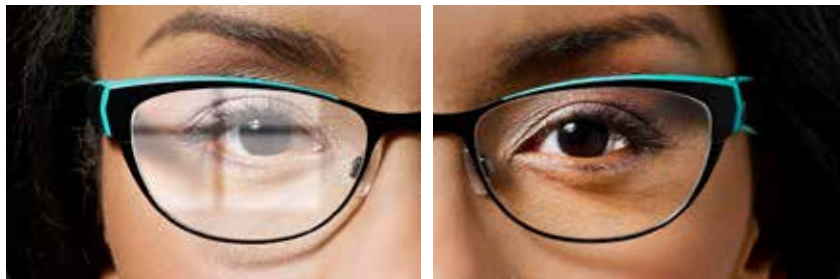
Dust
resistant



Substrate Matching
Properties (SMP)

Recharge filters blue light transmitted from the back-lit screens of digital devices. Perfect for patients who suffer from digital eye strain (DES).

- Filters blue light through a combination of absorption and reflection
- Keeps eyes comfortable and refreshed
- May help alleviate eye strain, fatigue, headaches, loss of focus and blurred vision (DES)
- Re-energizes focus



Please refer to page 27 to see the full list of anti-reflective treatments offered by HOYA.

Materials



Clear Blue Filter™ Everyday protection from damaging light rays



Recommended as
an effective UV filter
for the eyes and
surrounding skin.

All eyes are vulnerable.

From sunlight to digital devices, ultraviolet and high-energy blue light is everywhere.

Clear Blue Filter lenses may help protect eyes from the harmful effects of powerful rays.

Give your customers the best protection.

Block UVA/UVB rays and filter the most damaging, highest-energy blue light with Clear Blue Filter.

Provide comfort from sunlight, screen time, and other everyday activities. It also helps safeguard eyes from conditions linked to UV high-energy blue light.^{1,2}

Designed for daily wear.

These lenses are thin, lightweight, impact-resistant, and affordable—making them perfect for everyday use.



Safe for young eyes

Children are 70% more susceptible to high-energy blue light transmitted to a child's retina.³



Protection by design

Safety is built into the lens, not the coating.

¹ "The Family of Sunlight-Related Eye Diseases" Optometry & Vision Science, Volume 71.

² "Is sunlight exposure a risk factor for age-related macular degeneration?" British Journal of Ophthalmology, Volume 97.

³ "Clinical Light Damage to the Eye", Sidney Lerman, M.D.

Materials

HOYA Materials

1.50

Basic, thin, and value priced.

Lens features

- Ideal for value-oriented patients
- Best visual acuity for mild and moderate prescriptions

HOYA Phoenix®

Very strong and reliable material, the ideal choice for your customers and their children when it comes to protecting their eyes.

Lens features

- Impact resistant
- Sharper vision
- Lightweight lens material for all-day comfort
- UV protection

1.59

Thinner and lighter than regular plastic lenses.

Lens features

- Impact resistant
- UV protection

1.60

Premium-performing high-index lens material.

Lens features

- Very thin and lightweight
- UV protection

1.67

Exceptionally thin, strong, and light design with superior optical clarity.

Lens features

- Exceptionally thin
- 25% flatter than 1.60 or 1.59
- UV protection

1.74

The thinnest and flattest ultra high index lens material on the market.

Lens features

- Nearly 50% thinner than plastic
- Nearly 5% thinner than 1.67
- UV protection

Plastic 1.50

-6.00



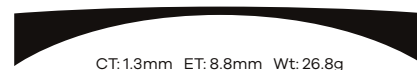
Phoenix 1.53

-6.00



Poly 1.59

-6.00



High-Index 1.60

-6.00



High-Index 1.67

-6.00



High-Index 1.74

-6.00



All data quoted for minus powers is for 65mm diameter lenses. The chart is for comparison purposes only. Actual lens results will differ based on individual prescription, personal measurements, and frame selected.

Sun solutions



The brand patients know and trust.

Offer them the best sun protection money can buy.

Today's patients are more health-conscious than ever. Give your patients the best sun protection money can buy and a brand they know and trust.



Coppertone Gray



Coppertone Brown



Coppertone Green



Recommended as an effective UV filter for the eyes and surrounding skin.



100%
UVA and UVB
protection



Up to 97%
reduction in
blinding glare²



3 unique colors
that do not distort
color perception



Utilizes a patented
manufacturing
technology

¹ Coppertone HEV Gray polycarbonate lens vs standard 1.50 polarized gray lens between 380nm-460nm
² HEV brown lenses

HOYA Mirror Collection



Introducing HOYA's latest mirror collection, with 19 new options available on a brown or gray polarized base lens.

Features:

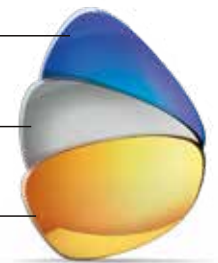
- Offers optimal sun protection by reflecting light away from the lens surface
- Reduces discomfort and eye strain caused by glare
- Features a fashionable mirror finish
- Backside AR for increased clarity

Flash Mirrors

Flash Blue Mirror
Ordering Code: **FBM**

Flash Silver Mirror
Ordering Code: **FSM**

Flash Gold Mirror
Ordering Code: **FGM**



Solid Mirrors



Gold Mirror
Ordering Code: **GDM**



Rose Gold Mirror
Ordering Code: **RGM**



Green Mirror
Ordering Code: **GRM**



Blue Mirror
Ordering Code: **BLM**



Silver Mirror
Ordering Code: **SLM**



Daybreak Luster Mirror
Ordering Code: **DLA**



Tranquility Essence Mirror
Ordering Code: **TEA**



Golden Ember Mirror
Ordering Code: **GEA**



Arctic Blue Mirror
Ordering Code: **ATB**



Caribbean Blue Mirror
Ordering Code: **CRB**



Pacific Blue Mirror
Ordering Code: **PFB**



Red Mirror
Ordering Code: **RRM**



Copper Mirror
Ordering Code: **CPM**



Ruby Mirror
Ordering Code: **RDM**



Light Blue Mirror
Ordering Code: **LBM**



Violet Mirror
Ordering Code: **LVM**

Lens illustrations are simulated to be as realistic as possible for demo purposes. Colors may differ slightly.

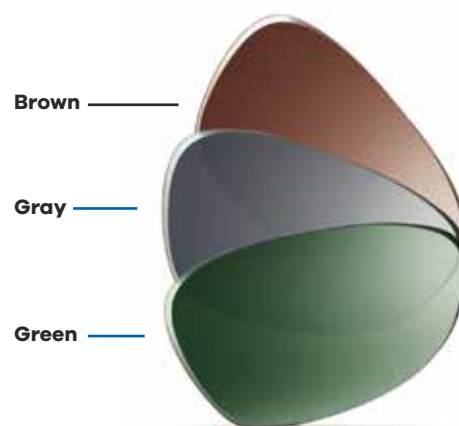



Enjoy more time by the pool, in the mountains, or at the beach with HOYA's Polarized sun lenses.

With HOYA's polarized sun lenses, blinding reflections and visual discomfort are no longer an issue. Reduced glare and enhanced contrast offer improved visual performance, comfort, and protection.

Features:

- Three fashion-forward colors
- Available in a wide range of designs including iD LifeStyle® 3 Sun
- Available with new HOYA mirror coatings
- Available for all ages




Reduces glare
and unpleasant
reflections


Protects against
discomfort from
excessive sunlight

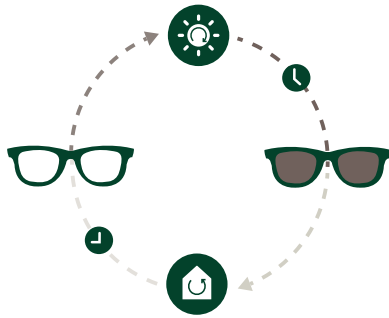

98% Polarized
Efficiency




Contrast-rich vision

The full Sensity® family: for limitless lifestyles

Make your move toward
Sensity light-adaptive lenses.



All Sensity® light-adaptive lenses feature the following benefits:

- Consistent performance in different climates and light conditions, thanks to Stabilight Technology**
- Outstanding contrast and glare reduction with Sensity's deep, natural colors
- Reduced glare when activated
- 100% protection against UV rays**
- Blue light protection indoors and outdoors***



Stand out with quality and comfort

Sensity® 2 provides all-day comfort for light-sensitive eyes, no matter the climate, season, or lifestyle.

Patient benefits:

- Best balance of fadeback speed and darkness for most patients
- Darkens to a dark category 3 sun tint
- Extremely clear indoors



Stand out with faster speed

Sensity® Fast is our fastest light-adaptive lenses, rapidly fading back from dark to clear.

Patient benefits:

- Ideal for first-time photochromic patients who prefer the fastest fadeback
- Darkens to a category 2 sun tint
- Extremely clear indoors



*Based on internal and external photochromic activation and deactivation measurements taken at different temperature levels.

^Stabilight Technology does not apply to Sensity Fast.

**All Sensity lenses provide 100% UV protection with the exception of Sensity 2 Oceanic Blue in 1.50 material which cuts 99.0% of UV. Internal assessment by HVC R&D Laboratories. Based on internal assessment according to ISO 8980-3:2022 for all HOYA branded plastic lenses except 1.50 standard lenses.

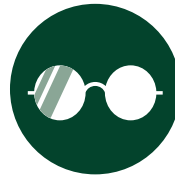
***Based on internal testing of average light transmission between 381nm-500nm compared to standard clear lens.



**Convenient
2 in 1 solution**



**UV/HEV
protection**



**Glare
reduction**



**Stable performance
in all climates**



Stand out with extra performance

Sensity® Dark lenses are engineered for outdoor activities and driving – ideal for an active lifestyle.

Patient benefits:

- Best for the most light-sensitive patients
- Our darkest Sensity lenses outdoors
- Lenses darken behind most car windshields
- Slight tint indoors for those sensitive to indoor light



Silver Gray



Bronze Brown



Emerald Green

SENSITY
DARK



Stand out with extra style

Sensity® Shine combines comfort, convenience, and fashion with a mirror coating on a photochromic lens.

Patient benefits:

- For wearers who want a fashionable mirror lens
- Fades back quickly to an attractive mirror shine indoors
- Lenses darken behind most car windshields



Shine Silver Gray



Shine Bronze Brown



Shine Emerald Green

SENSITY
SHINE

Product comparison chart

	HOYA lens designs	HOYA concept and benefits	Vision plan competitive comparisons
iD	<p>New</p> <p>iD MyStyle® 3</p>	<ul style="list-style-type: none"> • The pinnacle of personalization with nearly 400 design variations when using the iIdentifier™ • Can utilize an interactive consultation program to gather patient information, lifestyle requirements and wearing preferences to create a lens that is uniquely personalized • Incorporates two new technologies – 3D Binocular Vision™ to improve the unwanted prismatic effect at the periphery of the lens and AdaptEase™ Technology to improve the intermediate and near vision without compromising distance clarity • Uses Integrated Dual Surface™ (iD) design technology and Binocular Harmonization Technology™ to accomplish ideal binocular vision for a truly personalized design • Every pair is designed using HOYA's patented Binocular Eye Model™ and 3D Visual Acuity Simulation™ • Available in five convenience options: Tyro, Expert, Detail, Modern, Adventure 	<ul style="list-style-type: none"> • Shamir Autograph® Intelligence™ • Varilux® XR Track • Unity® Via Elite II
iD	<p>iD LifeStyle® 4</p>	<ul style="list-style-type: none"> • 3D Binocular Vision Technology with an improvement of the unwanted prismatic effects or prism imbalance between R and L induced by progressive distribution for near vision, which causes unusual feeling for wearers: Deformation of the image and swaying effect when moving • Individual wearing parameter • Three different designs (Indoor, Urban, Outdoor) • Binocular Harmonization Technology • Integrated Dual Side design with standardized front vertical power distribution and customized back horizontal progression – reduces eye rotation between distance and near zones and provides wider fields of view • Option for position of wear measurements. Different progression lengths from 11-16mm 	<ul style="list-style-type: none"> • Shamir Autograph III • Varilux XR Design • Zeiss Smartlife Individual • Unity Via Elite II
iD	<p>New</p> <p>iD WorkStyle® 3</p>	<ul style="list-style-type: none"> • Relieves symptoms related to digital eye strain (DES) • iD WorkStyle Space: The ideal lens for performing activities where the focus is beyond the distance of a computer screen • iD WorkStyle Screen: The best choice for professions requiring maximum clarity at an intermediate distance like those working in stores and offices • iD WorkStyle Zoom: Perfect for hobbies and laptop work that require high levels of concentration and sharp vision at close range • Best binocular vision with HOYA's Binocular Harmonization Technology 	<ul style="list-style-type: none"> • Essilor® Computer • Shamir Computer™ & Workspace™ • Zeiss® OfficeLens Book, Desk, Room • Unity® Via Office Pro
BKS	<p>Array® 2</p> <p>Array® 2 Wrap</p>	<ul style="list-style-type: none"> • Binocular Harmonization Technology takes into account the differences between right and left prescription to balance the design performance • Applies HOYA free form surfacing technology to the back side of any semi-finished single vision lens, in any material • Variable corridor length offers customization for ergonomic considerations • Array 2 Wrap provides compensated design for wrap frames 	<ul style="list-style-type: none"> • Kodak DS II™ • Shamir Autograph® II+ • Shamir Autograph® II Attitude™ • Varilux® Physio® W3+/ Stylistic Wrap • Zeiss® Precision (Superb, Plus, Pure) • Unity® Via II, Unity Plus II/ Mobile II/Wrap II
BKS	<p>Amplitude® BKS™</p> <p>Amplitude® Mini BKS™</p>	<ul style="list-style-type: none"> • Economical lenses to suit any budget • Comfortable design to suit most lifestyle needs • Wide fields of view with free form technology 	<ul style="list-style-type: none"> • Kodak Precise®/PB/Short • Shamir Element™ • Zeiss Synchrony® Easy Adapt • Varilux® Comfort 2 • Ethos® Plus
BKS	<p>HOYA GP Wide™</p>	<ul style="list-style-type: none"> • 23% wider than traditional progressive lenses • Horizontal asymmetry, balanced, comfortable binocular vision • Transmission based design • Natural all-around vision with wide near zone 	<ul style="list-style-type: none"> • SolaMax® • Kodak Concise • Essilor® Ovation • Essilor® Naturar • AO Compact • Varilux® Comfort

Product comparison chart

HOYA lens designs		HOYA concept and benefits	Vision plan competitive comparisons
ID	iD Single Vision®	<ul style="list-style-type: none"> HOYA's Integrated Dual Side free form technology Expanded peripheral viewing, especially in higher prescriptions Visual optimization for all powers Ideal combination of performance and cosmetics Higher visual performance 	<ul style="list-style-type: none"> Essilor Eyecode™ Single Vision Essilor Eyezen® +0 Shamir Autograph® II SV Zeiss® 3D SV
BKS	MySV™	<ul style="list-style-type: none"> HOYA's first fully compensated, free form single vision lens Compensates in the oblique angles offering 360° visual comfort Digital lenses provide a more accurate and precise prescription than standard single vision lenses Optimized base curve to fit any frame without altering the frame shape 	<ul style="list-style-type: none"> Essilor FIT™ Shamir Autograph® III SV Unity® SVXtra Zeiss® SmartLife SV Individual
BKS	Sync III™	<ul style="list-style-type: none"> Sync lenses have the distance power for everyday use and a 'boost zone' in the lower portion of the lens The boost zone is an area with an increased amount of relaxing power, reducing eye strain during prolonged up-close activities such as looking at digital screens, reading, or any 'near task' activities Three support levels: Sync III 5 (+0.57D), Sync III 9 (+0.95D) and Sync III 13 (+1.32D) 	<ul style="list-style-type: none"> Shamir Relax™ Essilor Eyezen® + 1, 2, 3 Zeiss® SmartLife Digital Lens Zeiss® EnergizeMe® SV Zeiss® Digital Lens Unity® Relieve 50/70

HOYA lens treatments		HOYA concept and benefits	Vision plan competitive comparisons
New	Super HiVision® Meiryó™ EX4™	<ul style="list-style-type: none"> Best-in-class surface durability Premium scratch resistance and AR performance, water-repellent, oil/grease-repellent¹ Excellent smudge resistance, eliminates glare, and helps reduce eye fatigue Superior clarity that lasts longer² Maintains "Easy Clean" features Anti-static <p>1. HOYA data on file. Product assessment report – Hi-Vision Meiryó. 05/2023. Compared to several competitor coatings including major competitor's best coatings. Passed 2.5kg SWSC (Steel Wool Scratch) test when most competitive lenses tested did not pass 1kg in the SWSC (Steel Wool Scratch).</p> <p>2. HOYA data on file. Product assessment report – Hi-Vision Meiryó. 05/2023. Hi-Vision Meiryó lasts longer than all major competitors. 56% lower reflectance than major competitor's best coating resulting in exceptional clarity. Hi-Vision Meiryó maintains Hydrophobic performance up to 5X that of closest competitors.</p>	<ul style="list-style-type: none"> Crizal® Sapphire™ HR Zeiss® DuraVision® Platinum UV Shamir Glacier Expression™
	Super HiVision® EX3®	<ul style="list-style-type: none"> Smudge resistant, eliminates glare, and helps reduce eye fatigue Includes View Protect® & Substrate Matching Technology 	<ul style="list-style-type: none"> Crizal® Sapphire™ UV Zeiss® DuraVision® Platinum
	Recharge®	<ul style="list-style-type: none"> Reduces the amount of blue light that reaches the eyes emitted by most LED screens Greater comfort for prolonged amounts of time in front of backlit displays Includes the same scratch and smudge resistance benefits as EX3+ Substrate Matching Technology 	<ul style="list-style-type: none"> Crizal® Previncia™ Zeiss® Duravision® BlueProtect TechShield® Blue Essilor Essential Blue Series®
	Super HiVision®	<ul style="list-style-type: none"> Superior scratch resistance Exceptional smudge resistance Includes View Protect & Substrate Matching Technology 	<ul style="list-style-type: none"> Crizal® Avancé™ UV Zeiss® DuraVision® Silver
	HiVision® View Protect®	<ul style="list-style-type: none"> Front- and backside scratch resistance Smudge resistant treatment View Protect "easy to clean" treatment 	<ul style="list-style-type: none"> Crizal® Alize™ UV Zeiss® DuraVision® Silver
	Sensity® Family (Sensity 2, Sensity Dark, Sensity Shine)	<ul style="list-style-type: none"> Stabilight Technology™ ensures consistent performance in different climates and seasons Excellent contrast and glare reduction with Sensity's four deep, natural colors Exceptional optical quality and durability due to photochromic precision technology Darkens in the car (Sensity Dark and Sensity Shine only) 	<ul style="list-style-type: none"> Transitions™ Signature® Gen 8™ Transitions® XTRActive® New Generation Zeiss® PhotoFusion®
	Sensity® Fast	<ul style="list-style-type: none"> The fastest HOYA light-adaptive lens technology available Cutting-edge speed when fading back from dark to clear Better indoor clarity than the rest of the Sensity family 	<ul style="list-style-type: none"> Unity® SunSync® Elite II

Lens availability charts

Free Form Progressives

New

iD MyStyle® 3

iD LifeStyle® 4*

Array® 2

Minimum Fitting Height	Personalized to frame 14mm	20mm/14mm	21mm/19mm/17mm/14mm
Plastic 1.50	-8.00 to +6.00 Cyl. to -6.00 (+0.75 to +3.50)	-8.00 to +6.00 Cyl. to -6.00 (+0.75 to +4.00)	-10.00 to +6.00 Cyl. to -6.00 (+0.75 to +4.00)
Clear Blue Filter 1.50	-8.00 to +6.00 Cyl. to 6.00 (+0.75 to +3.50))	-8.00 to +6.00 Cyl. to 6.00 (+0.75 to +4.00)	-10.00 to +6.00 Cyl. to -6.00 (+0.75 to +4.00)
Plastic 1.50 Polarized		-10.00 to +3.75 Cyl. to -6.00 (+0.75 to +4.00) ●●●	-10.00 to +3.75 Cyl. to -6.00 (+0.75 to +4.00) ●●●
Plastic 1.50 Sensity™ 2	-8.00 to +6.00 Cyl. to -6.00 (+0.75 to +3.50) ●●●/SD/SS	-8.00 to +6.00 Cyl. to -6.00 (+0.75 to +4.00) ●●●/SD/SS	-8.00 to +6.00 Cyl. to -6.00 (+0.75 to +4.00) ●●●/SF/SD/SS
Plastic 1.50 Transitions®			-10.00 to +3.75 Cyl. to -6.00 (+0.75 to +4.00) ●●/S/X/XP/PG
Phoenix® 1.53	-8.00 to +6.00 Cyl. to -6.00 (+0.75 to +3.50)	-8.00 to +6.00 Cyl. to -6.00 (+0.75 to +4.00)	-10.00 to +6.00 Cyl. to -6.00 (+0.75 to +4.00)
Phoenix® 1.53 Polarized		-10.00 to +4.50 Cyl. to -6.00 (+0.75 to +4.00) ●●	-10.00 to +4.50 Cyl. to -6.00 (+0.75 to +4.00) ●●
Phoenix® 1.53 Sensity™ 2	-8.00 to +6.00 Cyl. to -6.00 (+0.75 to +3.50) ●●●/SD/SS	-8.00 to +6.00 Cyl. to -6.00 (+0.75 to +4.00) ●●●/SD/SS	-10.00 to +6.00 Cyl. to -6.00 (+0.75 to +4.00) ●●●/SF/SD/SS
Phoenix® 1.53 Transitions®			-10.00 to +6.00 Cyl. to -6.00 (+0.75 to +4.00) ●●/S/X
Poly 1.59	-6.00 to +6.00 Cyl. to 6.00 (+0.75 to +4.00)	-6.00 to +6.00 Cyl. to -4.00 (+1.00 to +3.00)	-13.00 to +6.00 Cyl. to -6.00 (+0.75 to +4.00)
Clear Blue Filter 1.59	-6.00 to +6.00 Cyl. to 6.00 (+0.75 to +4.00)	-6.00 to +6.00 Cyl. to 6.00 (+0.75 to +4.00)	-13.00 to +6.00 Cyl. to -6.00 (+0.75 to +4.00)
Poly 1.59 Polarized		-13.00 to +5.25 Cyl. to -6.00 (+0.75 to +4.00) ●●●	-13.00 to +5.25 Cyl. to -6.00 (+0.75 to +4.00) ●●●
Poly 1.59 Coppertone®		-13.00 to +5.25 Cyl. to -6.00 (+0.75 to +4.00) ●●●	-10.00 to +6.00 Cyl. to -6.00 (+0.75 to +4.00) ●●●
Poly 1.59 Sensity™ 2	-6.00 to +6.00 Cyl. to 6.00 (+0.75 to +4.00) ●●●/SD/SS	-6.00 to +6.00 Cyl. to 6.00 (+0.75 to +4.00) ●●●/SD/SS	-10.00 to +6.00 Cyl. to -6.00 (+0.75 to +4.00) ●●●/SF/SD/SS
Poly 1.59 Transitions®			-13.00 to +5.25 Cyl. to -6.00 (+0.75 to +4.00) ●●/S/X/XP/PG
Hi-Index 1.60	-11.00 to +8.00 Cyl. to -6.00 (+0.75 to +3.50)	-11.00 to +8.00 Cyl. to -6.00 (+0.75 to +4.00)	-10.00 to +6.00 Cyl. to -6.00 (+0.75 to +4.00)
Hi-Index 1.60 Polarized			-10.00 to +6.00 Cyl. to -6.00 (+0.75 to +4.00)
Hi-Index 1.60 Sensity™ 2	-11.00 to +8.00 Cyl. to -6.00 (+0.75 to +3.50) ●●●/SD/SS	-11.00 to +8.00 Cyl. to -6.00 (+0.75 to +3.50) ●●●/SD/SS	-10.00 to +6.00 Cyl. to -6.00 (+0.75 to +3.50) ●●●/SD/SS
Hi-Index 1.60 Transitions®			-10.00 to +6.00 Cyl. to -6.00 (+0.75 to +4.00) ●●
Hi-Index 1.67	-13.00 to +8.00 Cyl. to -6.00 (+0.75 to +3.50)	-13.00 to +8.00 Cyl. to -6.00 (+0.75 to +4.00)	-13.00 to +7.50 Cyl. to -6.00 (+0.75 to +4.00)
Clear Blue Filter 1.67			-13.00 to +7.50 Cyl. to -6.00 (+0.75 to +4.00)
Hi-Index 1.67 Polarized		-10.00 to +6.00 Cyl. to -6.00 (+0.75 to +4.00) ●●●	-13.00 to +6.00 Cyl. to -6.00 (+0.75 to +4.00) ●●●
Hi-Index 1.67 Sensity™ 2	-13.00 to +8.00 Cyl. to -6.00 (+0.75 to +3.50) ●●●/SD/SS	-13.00 to +8.00 Cyl. to -6.00 (+0.75 to +4.00) ●●●/SD/SS	-13.00 to +7.50 Cyl. to -6.00 (+0.75 to +4.00) ●●●/SF/SD/SS
Hi-Index 1.67 Transitions®			-13.00 to +7.50 Cyl. to -6.00 (+0.75 to +4.00) ●●/S/X/XP/PG
Hi-Index 1.74	-13.00 to +8.00 Cyl. to -6.00 (+0.75 to +3.50)	-13.00 to +8.00 Cyl. to -6.00 (+0.75 to +3.50)	-13.00 to +8.00 Cyl. to -6.00 (+0.75 to +4.00)

S = Transitions GEN S X = Transitions® XTRActive® New Generation XP/PG = Transitions® XTRActive® Polarized™ Gray

SF = Sensity® Fast Gray & Brown SD = Sensity® Dark SS = Sensity® Shine

*Not all iD LifeStyle 3 & 4 Polarized lenses come with iD technology.

** Sensity® Shine, Sensity™ 2 Blue/Green, Sensity™ 2 in 1.60, and Sensity® Dark in iD designs add powers are available from +0.75 to +3.50.

Lens availability charts

Free Form Progressives	Array® 2 Wrap	Amplitude® HD3/Mini	Amplitude® BKS/Mini	HOYA GP Wide™
Minimum Fitting Height	21mm/19mm/17mm/14mm	18mm/14mm	19mm/14mm	18mm
Plastic 1.50	-5.00 to +4.00 Cyl. to -6.00 (+0.75 to +4.00)	-8.00 to +6.00 Cyl. to -6.00 (+0.75 to +4.00)	-10.00 to +6.00 Cyl. to -6.00 (+0.75 to +4.00)	-10.00 to +6.00 Cyl. to -6.00 (+0.75 to +4.00)
Clear Blue Filter 1.50	-5.00 to +4.00 Cyl. to -6.00 (+0.75 to +3.50)	-8.00 to +6.00 Cyl. to -6.00 (+0.75 to +4.00)	-10.00 to +6.00 Cyl. to -6.00 (+0.75 to +4.00)	-10.00 to +6.00 Cyl. to -6.00 (+0.75 to +4.00)
Plastic 1.50 Polarized	-5.00 to +4.00 Cyl. to -6.00 (+0.75 to +4.00) ●●		-10.00 to +3.75 Cyl. to -6.00 (+0.75 to +4.00) ●●●	-10.00 to +3.75 Cyl. to -6.00 (+0.75 to +4.00) ●●●
Plastic 1.50 Sensity® 2	-5.00 to +4.00 Cyl. to -6.00 (+0.75 to +4.00) ●●●●/SF/SD/SS	-8.00 to +6.00 Cyl. to -6.00 (+0.75 to +4.00) ●●●●/SD/SS	-8.00 to +6.00 Cyl. to -6.00 (+0.75 to +4.00) ●●●●/SF/SD/SS	-8.00 to +6.00 Cyl. to -6.00 (+0.75 to +4.00) ●●●●/SF/SD/SS
Plastic 1.50 Transitions®	-5.00 to +4.00 Cyl. to -4.00 (+0.75 to +4.00) ●●/S/X/XPG	-8.00 to +6.00 Cyl. to -6.00 (+0.75 to +4.00) ●●	-10.00 to +3.75 Cyl. to -6.00 (+0.75 to +4.00) ●●/S/X/XPG	-10.00 to +3.75 Cyl. to -6.00 (+0.75 to +4.00) ●●/S/X/XPG
Phoenix® 1.53	-5.00 to +4.00 Cyl. to -6.00 (+0.75 to +4.00)	-8.00 to +6.00 Cyl. to -6.00 (+0.75 to +4.00)	-10.00 to +6.00 Cyl. to -6.00 (+0.75 to +4.00)	-10.00 to +6.00 Cyl. to -6.00 (+0.75 to +4.00)
Phoenix® 1.53 Polarized	-5.00 to +4.00 Cyl. to -6.00 (+0.75 to +4.00) ●●		-10.00 to +4.50 Cyl. to -6.00 (+0.75 to +4.00) ●●	-10.00 to +4.50 Cyl. to -6.00 (+0.75 to +4.00) ●●
Phoenix® 1.53 Sensity® 2	-5.00 to +4.00 Cyl. to -6.00 (+0.75 to +4.00) ●●●●/SF/SD/SS	-8.00 to +6.00 Cyl. to -6.00 (+0.75 to +4.00) ●●●●/SD/SS	-10.00 to +6.00 Cyl. to -6.00 (+0.75 to +4.00) ●●●●/SF/SD/SS	-10.00 to +6.00 Cyl. to -6.00 (+0.75 to +4.00) ●●●●/SF/SD/SS
Phoenix® 1.53 Transitions®	-5.00 to +4.00 Cyl. to -4.00 (+0.75 to +4.00) ●●/S/X	-8.00 to +6.00 Cyl. to -6.00 (+0.75 to +4.00) ●●	-10.00 to +6.00 Cyl. to -6.00 (+0.75 to +4.00) ●●/S/X	-10.00 to +6.00 Cyl. to -6.00 (+0.75 to +4.00) ●●/S/X
Poly 1.59	-6.00 to +4.00 Cyl. to -6.00 (+0.75 to +4.00)	-6.00 to +6.00 Cyl. to -6.00 (+0.75 to +4.00)	-13.00 to +6.00 Cyl. to -6.00 (+0.75 to +4.00)	-13.00 to +6.00 Cyl. to -6.00 (+0.75 to +4.00)
Clear Blue Filter 1.59	-6.00 to +4.00 Cyl. to -6.00 (+0.75 to +4.00)	-6.00 to +6.00 Cyl. to -6.00 (+0.75 to +4.00)	-13.00 to +6.00 Cyl. to -6.00 (+0.75 to +4.00)	-13.00 to +6.00 Cyl. to -6.00 (+0.75 to +4.00)
Poly 1.59 Polarized	-6.00 to +4.00 Cyl. to -6.00 (+0.75 to +4.00) ●●	-6.00 to +6.00 Cyl. to -6.00 (+0.75 to +4.00) ●●●	-13.00 to +5.25 Cyl. to -6.00 (+0.75 to +4.00) ●●●	-13.00 to +5.25 Cyl. to -6.00 (+0.75 to +4.00) ●●●
Poly 1.59 Coppertone®	-6.00 to +4.00 Cyl. to -6.00 (+0.75 to +4.00) ●●●		-10.00 to +6.00 Cyl. to -6.00 (+0.75 to +4.00) ●●●	-10.00 to +6.00 Cyl. to -6.00 (+0.75 to +4.00) ●●●
Poly 1.59 Sensity® 2	-6.00 to +4.00 Cyl. to -6.00 (+0.75 to +4.00) ●●●●/SF/SD/SS	-6.00 to +6.00 Cyl. to -6.00 (+0.75 to +4.00) ●●●●/SD/SS	-10.00 to +6.00 Cyl. to -6.00 (+0.75 to +4.00) ●●●●/SF/SD/SS	-10.00 to +6.00 Cyl. to -6.00 (+0.75 to +4.00) ●●●●/SF/SD/SS
Poly 1.59 Transitions®	-6.00 to +4.00 Cyl. to -4.00 (+0.75 to +4.00) ●●/S/X/XPG	-6.00 to +6.00 Cyl. to -6.00 (+0.75 to +4.00) ●●	-13.00 to +5.25 Cyl. to -6.00 (+0.75 to +4.00) ●●/S/X/XPG	-13.00 to +5.25 Cyl. to -6.00 (+0.75 to +4.00) ●●/S/X/XPG
Hi-Index 1.60	-6.00 to +4.00 Cyl. to -6.00 (+0.75 to +4.00)	-11.00 to +8.00 Cyl. to -6.00 (+0.75 to +4.00)	-10.00 to +6.00 Cyl. to -6.00 (+0.75 to +4.00)	-10.00 to +6.00 Cyl. to -6.00 (+0.75 to +4.00)
Hi-Index 1.60 Polarized	-6.00 to +4.00 Cyl. to -6.00 (+0.75 to +4.00)		-10.00 to +6.00 Cyl. to -6.00 (+0.75 to +4.00)	-10.00 to +6.00 Cyl. to -6.00 (+0.75 to +4.00)
Hi-Index 1.60 Sensity® 2		-11.00 to +8.00 Cyl. to -6.00 (+0.75 to +3.50) /SD/SS	-10.00 to +6.00 Cyl. to -6.00 (+0.75 to +3.50) ●●●●/SD/SS	-10.00 to +6.00 Cyl. to -6.00 (+0.75 to +3.50) ●●●●/SD/SS
Hi-Index 1.60 Transitions®	-6.00 to +4.00 Cyl. to -4.00 (+0.75 to +4.00) ●●		-10.00 to +6.00 Cyl. to -6.00 (+0.75 to +4.00) ●●	-10.00 to +6.00 Cyl. to -6.00 (+0.75 to +4.00) ●●
Hi-Index 1.67	-6.00 to +4.00 Cyl. to -6.00 (+0.75 to +4.00)	-13.00 to +8.00 Cyl. to -6.00 (+0.75 to +4.00)	-13.00 to +7.50 Cyl. to -6.00 (+0.75 to +4.00)	-13.00 to +7.50 Cyl. to -6.00 (+0.75 to +4.00)
Clear Blue Filter 1.67	-6.00 to +4.00 Cyl. to -6.00 (+0.75 to +4.00)		-13.00 to +7.50 Cyl. to -6.00 (+0.75 to +4.00)	-13.00 to +7.50 Cyl. to -6.00 (+0.75 to +4.00)
Hi-Index 1.67 Polarized	-6.00 to +4.00 Cyl. to -6.00 (+0.75 to +4.00) ●●		-13.00 to +6.00 Cyl. to -6.00 (+0.75 to +4.00) ●●●	-13.00 to +6.00 Cyl. to -6.00 (+0.75 to +4.00) ●●●
Hi-Index 1.67 Sensity® 2	-6.00 to +4.00 Cyl. to -6.00 (+0.75 to +4.00) ●●●●/SF/SD/SS	-13.00 to +8.00 Cyl. to -6.00 (+0.75 to +4.00) ●●●●/SD/SS	-13.00 to +7.50 Cyl. to -6.00 (+0.75 to +4.00) ●●●●/SF/SD/SS	-13.00 to +7.50 Cyl. to -6.00 (+0.75 to +4.00) ●●●●/SF/SD/SS
Hi-Index 1.67 Transitions®	-6.00 to +4.00 Cyl. to -4.00 (+0.75 to +4.00) ●●/S/X/XPG	-13.00 to +8.00 Cyl. to -6.00 (+0.75 to +4.00) ●●	-13.00 to +7.50 Cyl. to -6.00 (+0.75 to +4.00) ●●/S/X/XPG	-13.00 to +7.50 Cyl. to -6.00 (+0.75 to +4.00) ●●/S/X/XPG
Hi-Index 1.74	-6.00 to +4.00 Cyl. to -6.00 (+0.75 to +4.00)	-13.00 to +8.00 Cyl. to -6.00 (+0.75 to +3.50)	-13.00 to +8.00 Cyl. to -6.00 (+0.75 to +4.00)	-13.00 to +8.00 Cyl. to -6.00 (+0.75 to +4.00)

S = Transitions GEN S X = Transitions® XTRActive® New Generation XPG = Transitions® XTRActive® Polarized™ Gray
 SF = Sensity® Fast Gray & Brown SD = Sensity® Dark SS = Sensity® Shine

*Not all iD LifeStyle 3 & 4 Polarized lenses come with iD technology.

** Sensity® Shine, Sensity® 2 Blue/Green, Sensity® 2 in 1.60, and Sensity® Dark in iD designs add powers are available from +0.75 to +3.50.

Lens availability charts

	MySV™ Single Vision iQ™ SV	New iD WorkStyle® 3 (Space, Screen, Zoom)	Sync III™
Minimum Fitting Height	Personalized to frame 18mm		
Plastic 1.50	-10.00 to +10.00 Cyl. to -6.00	-8.00 to +5.00 Cyl. to -4.00 (+1.00 to +3.50)	-10.00 to +6.00 Cyl. to -6.00
Clear Blue Filter 1.50	-10.00 to +10.00 Cyl. to -6.00		-10.00 to +6.00 Cyl. to -6.00
Plastic 1.50 Polarized	-10.00 to +4.00 Cyl. to -6.00 ●●●		-10.00 to +6.00 Cyl. to -6.00 ●●●
Plastic 1.50 Sensity® 2	-10.00 to +4.00 Cyl. to -6.00 ●●●/SF/SD/SS	-8.00 to +5.00 Cyl. to -4.00 (+1.00 to +3.50) ●●●/SD/SS	-8.00 to +6.00 Cyl. to -6.00 ●●●/SF/SD/SS
Plastic 1.50 Transitions®	-8.00 to +9.00 Cyl. to -4.00 ●●/S/X/XP		-10.00 to +6.00 Cyl. to -6.00 ●●/S/X/XP
Phoenix® 1.53	-13.00 to +9.00 Cyl. to -6.00	-8.00 to +5.00 Cyl. to -4.00 (+1.00 to +3.50)	-10.00 to +6.00 Cyl. to -6.00
Phoenix® 1.53 Polarized	-12.00 to +6.00 Cyl. to -6.00 ●●		-10.00 to +4.50 Cyl. to -6.00 ●●
Phoenix® 1.53 Sensity® 2	-13.00 to +9.00 Cyl. to -6.00 ●●●/SF/SD/SS	-8.00 to +5.00 Cyl. to -4.00 (+1.00 to +3.50) ●●●/SD/SS	-10.00 to +6.00 Cyl. to -6.00 ●●●/SF/SD/SS
Phoenix® 1.53 Transitions®	-13.00 to +9.00 Cyl. to -4.00 ●●/S/X		-10.00 to +6.00 Cyl. to -6.00 ●●/S/X
Poly 1.59	-10.00 to +6.00 Cyl. to -6.00	-8.00 to +5.00 Cyl. to -4.00 (+1.00 to +3.50)	-13.00 to +6.00 Cyl. to -6.00
Clear Blue Filter 1.59	-10.00 to +6.00 Cyl. to -6.00	-8.00 to +5.00 Cyl. to -4.00 (+1.00 to +3.50)	-13.00 to +6.00 Cyl. to -6.00
Poly 1.59 Polarized	-9.00 to +6.00 Cyl. to -6.00 ●●●		-13.00 to +6.00 Cyl. to -6.00 ●●●
Poly 1.59 Coppertone®	-9.00 to +6.00 Cyl. to -6.00 ●●●		-13.00 to +6.00 Cyl. to -6.00 ●●●
Poly 1.59 Sensity® 2	-9.00 to +6.00 Cyl. to -6.00 ●●●/SF/SD/SS		-13.00 to +6.00 Cyl. to -6.00 ●●●/SF/SD/SS
Poly 1.59 Transitions®	-6.00 to +6.00 Cyl. to -4.00 ●●/S/X/XPG		-13.00 to +5.25 Cyl. to -6.00 ●●/S/X/XPG
Hi-Index 1.60	-13.00 to +8.00 Cyl. to -6.00	-11.00 to +7.00 Cyl. to -4.00 (+1.00 to +3.50)	-10.00 to +6.00 Cyl. to -6.00
Hi-Index 1.60 Polarized	-13.00 to +8.00 Cyl. to -6.00		-10.00 to +6.00 Cyl. to -6.00
Hi-Index 1.60 Sensity® 2	-13.00 to +6.50 Cyl. to -6.00 ●●●/SD/SS	-10.00 to +6.00 Cyl. to -4.00 (+1.00 to +3.50) ●●●/SD/SS	-10.00 to +6.00 Cyl. to -6.00 ●●●/SD/SS
Hi-Index 1.60 Transitions®	-10.00 to +8.00 Cyl. to -4.00 ●●/8		-10.00 to +6.00 Cyl. to -6.00 ●●/8
Hi-Index 1.67	-15.00 to +8.00 Cyl. to -6.00	-13.00 to +7.00 Cyl. to -4.00 (+1.00 to +3.50)	-13.00 to +7.50 Cyl. to -6.00
Clear Blue Filter 1.67	-15.00 to +8.00 Cyl. to -6.00		-13.00 to +7.50 Cyl. to -6.00
Hi-Index 1.67 Polarized	-15.00 to +10.00 Cyl. to -6.00 ●●●		-13.00 to +6.00 Cyl. to -6.00 ●●●
Hi-Index 1.67 Sensity® 2	-15.00 to +8.00 Cyl. to -6.00 ●●●/SF/SD/SS	-13.00 to +7.50 Cyl. to -4.00 (+0.75 to +3.50) ●●●/SD/SS	-13.00 to +7.50 Cyl. to -6.00 ●●●/SF/SD/SS
Hi-Index 1.67 Transitions®	-10.00 to +8.00 Cyl. to -4.00 ●●/S/X/XPG		-13.00 to +7.50 Cyl. to -6.00 ●●/S/X/XPG
Hi-Index 1.74	-15.00 to +10.00 Cyl. to -6.00	-13.00 to +8.00 Cyl. to -4.00 (+0.75 to +3.50)	-13.00 to +8.00 Cyl. to -6.00

S = Transitions GEN S X = Transitions® XTRActive® New Generation XPG = Transitions® XTRActive® Polarized™ Gray
 SF = Sensity® Fast Gray & Brown SD = Sensity® Dark SS = Sensity® Shine

*Not all iD LifeStyle 3 & 4 Polarized lenses come with iD technology.

** Sensity® Shine, Sensity® 2 Blue/Green, Sensity® 2 in 1.60, and Sensity® Dark in iD designs add powers are available from +0.75 to +3.50.

AR compatibility guide

Key		■ Super HiVision® Meiryó™ EX4™	■ Super HiVision® EX3+™ & EX3™	■ Recharge*	■ Super HiVision®	■ HiVision® w/VP																	
Warranty		2 Years/unlimited			2 Years/unlimited																		
Designs		Plastic / Plastic CBF	Plastic Sensity® 2	Plastic Transitions®	Plastic Polarized	Phoenix®	Phoenix® Sensity® 2	Phoenix® Transitions®	Phoenix® Polarized	Poly / Poly CBF	Poly Sensity® 2	Poly Transitions®	Poly Polarized	HI-Index 1.60	HI-Index 1.60 Sensity® 2	HI-Index 1.60 Transitions®	HI-Index 1.60 Polarized	HI-Index 1.67 / HI-Index 1.67 CBF	HI-Index 1.67 Sensity® 2	HI-Index 1.67 Transitions®	HI-Index 1.67 Polarized	HI-Index 1.74	
Refractive index		1.50	1.50	1.50	1.50	1.53	1.53	1.53	1.53	1.59	1.59	1.59	1.59	1.60	1.60	1.60	1.60	1.67	1.67	1.67	1.67	1.74	
New	iD MyStyle® 3	■†	■			■	■			■	■	■	■	■	■			1.67 Only	■			■	■
	iD LifeStyle® 4	■	■	■	■	■	■	■	■	■	■	■	■	■	■	■	■	1.67 Only	■	■	■	■	■
	Array 2/Wrap	■	■	■	■	■	■	■	■	■	■	■	■	■	■	■	■	■	■	■	■	■	■
	Amplitude® BKS/Mini	■	■	■	■	■	■	■	■	■	■	■	■	■	■	■	■	■	■	■	■	■	■
	Amplitude® HD3/Mini	■	■	■		■	■	■		■	■	■	■	■	■	■		1.67 Only	■	■	■	■	■
New	iD WorkStyle® 3	■	■			■	■							■	■			■	■				
	HOYA GP Wide®	■	■	■	■	■	■	■	■	■	■	■	■	■	■	■	■	■	■	■	■	■	■
	Sync III™	■	■	■	■	■	■	■	■	■	■	■	■	■	■	■	■	■	■	■	■	■	■
	MySV™	■	■	■	■	■	■	■	■	■	■	■	■	■	■	■	■	■	■	■	■	■	■
	ST28 ST28 iQ™	■		■		■		■		■				■				■					■
	ST35	■		■	■	■		■		■		■	■					■					
	RD24	■				■																	
	ST7X28	Plastic Only ■								Poly Only ■									■				
	ST8X35	Plastic Only ■								Poly Only ■									■				

*Super HiVision Meiryó EX4, Super HiVision EX3+, Super HiVision EX3, Recharge, and Super HiVision automatically include the View Protect Performance.
 **Array 2 Wrap 1.74 only available in PAV or PAR.
 †1.50 CBF only for Super HiVision Meiryó EX4.



How corridor lengths impact patient satisfaction

Corridor lengths can have an impact on your patient’s experience with their eyewear. The technology in many free form progressive lenses uses unique algorithms to determine the best corridor for each patient prescription. **The question is: Is that always the best option? Let’s find out!**

Fixed vs. Variable

There really is no difference between fixed and variable corridor lengths. When you select a variable corridor length, the algorithm determines which FIXED corridor to use. This corridor length is calculated based off the B measurement of the frame and the fitting height of the patient. The variable option should be used with a majority of patients as the algorithm will determine the best fixed corridor.

For HOYA lens designs, the corridor length is measured from the fitting height to 100% of the add power. Corridor length options range from 11mm to 17mm, depending on the lens design. The length of the corridor has an impact on the amount of distortion found in the progressive design.

Short vs. Long

In the early 2000’s, smaller frame designs became popular. This necessitated the need for a shorter corridor. Frame designs today tend to be larger, and a longer corridor is an option. There are pros and cons to a short corridor. The downside to a short corridor is more distortion, the benefit is the ability to quickly find the reading zone and they can select wider variety of frame size. The downside of a long corridor is the reading tends to be lower than the patient’s natural posture and harder to find, and the benefit is less distortion.



Pro Tip:

Using a centration chart to verify all the zones are within the lens shape will dramatically reduce redos.

iD MyStyle® 3

When the fitting height is: (in mm)		Software Chooses: (Corridor Length)
FROM	TO	iD MyStyle 3
14.0	15.9	11
16.0	17.9	12
18.0	21.9	13
22.0	99.0	14
Only available through fixed corridor selections		15
		16

iD LifeStyle® 4

When the fitting height is: (in mm)		Software Chooses: (Corridor Length)
FROM	TO	iD LifeStyle 4
14.0	15.9	11
16.0	17.9	12
18.0	21.9	13
22.0	99.0	14
Only available through fixed corridor selections		15
		16

iD LifeStyle® 3

When the fitting height is: (in mm)		Software Chooses: (Corridor Length)
FROM	TO	iD LifeStyle 3
14.0	15.9	11
16.0	17.9	12
18.0	21.9	13
22.0	99.0	14

Array® 2

When the fitting height is: (in mm)		Software Chooses: (Corridor Length)
FROM	TO	Array 2
14.0	16.9	11
17.0	20.9	13
21.0	26.9	15
27.0	99.0	17

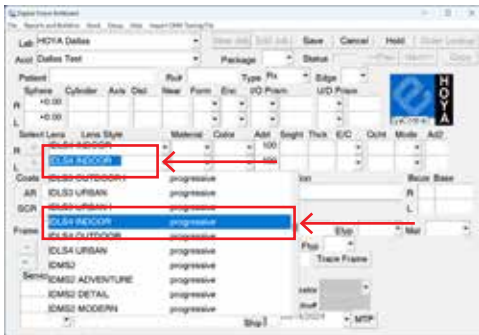
HOYA Progressive Fixed Corridor Guide

How to order

Please note, the directions below only work with DVI specifically.*

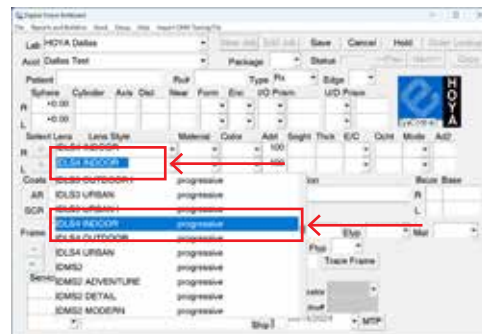
Ordering VL version of IDLS4:

- Select the lens style
- Enter the Rx, PD, fitting height, material, and any coatings or treatments
- Lab will choose appropriate corridor length for fitting height submitted

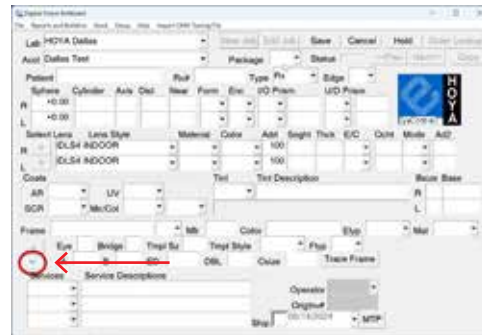


Ordering FIXED CORRIDOR version of IDLS4:

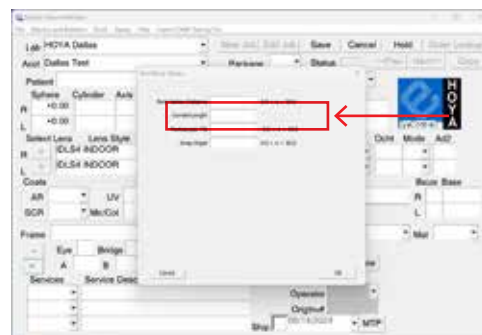
- Select the lens style
- Enter the Rx, PD, fitting height, material, and any coatings or treatments



- Click on "eyeball" icon to open up box for POW measurements



- Type the specific corridor wanted (11, 12, 13, 14, 15, 16) in the box labeled "Corridor Length"



*To order fixed corridor lengths with Vision Web, Eyefinity, EyeMed, or any other portal the customer would need to specify the corridor wanted in the "notes to lab" field to the lab.

Notes

Ways to grow your practice with HOYA



Visionary Alliance™ – start earning rewards.

Independent practices need support. Visionary Alliance is designed for you. No contracts. No intrusive data requests. Only benefits.

Enroll today!
[visionaryalliance.com](https://www.visionaryalliance.com)

HOYA Hub™ – your self-service portal to the lens and laboratory business.

Gain access to tools, resources, job status, support, and pay your bills by signing up for the HOYA Hub.

Support for the HOYA Hub is available by calling **844.736.5772** or emailing hoyahubusa@hoya.com

HOYA Marketplace – take advantage of HOYA's online shopping portal.

HOYA Marketplace is a comprehensive webshop that caters to the needs of eye care professionals. It offers a diverse range of products, including patient brochures, and practice demonstration tools.

Visit HOYA Marketplace today via the HOYA Hub. For more information contact your HOYA Territory Sales Manager or email: marketplaceus@hoya.com

 **LinkedIn:** [linkedin.com/company/hoya-vision-care](https://www.linkedin.com/company/hoya-vision-care)

 **Facebook:** [facebook.com/hoyavision](https://www.facebook.com/hoyavision)

 **X (Twitter):** twitter.com/ProfMurrayHoya

 **Instagram:** [instagram.com/hoya_vision_care](https://www.instagram.com/hoya_vision_care)

 **Vimeo:** [vimeo.com/user7919795](https://www.vimeo.com/user7919795)

 **HOYA Blog:** [hoyavision.com/en-us/blog](https://www.hoyavision.com/en-us/blog)

 **For more information contact us at:** sales.support@hoya.com

For more information visit [hoyavision.us](https://www.hoyavision.us) or contact your sales representative.

Spanish language website: [hoyavision.com/es-us](https://www.hoyavision.com/es-us)